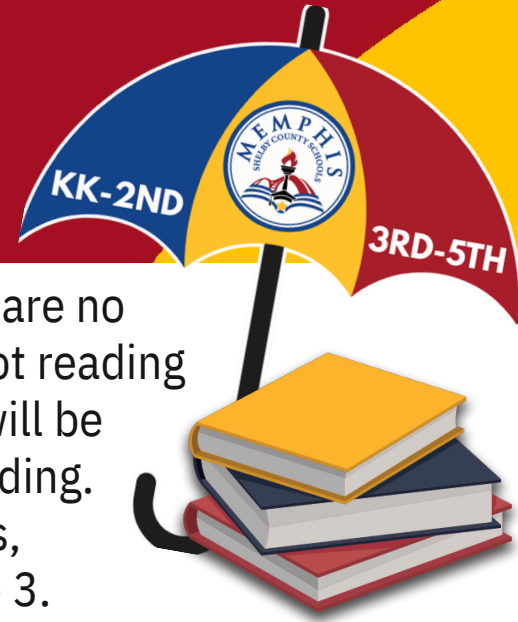


**2024 - 2025  
SCHOOL  
YEAR**

# MONITORING & SUPPORTING STUDENT SUCCESS GRADES K-2



Student achievement is the District’s highest priority. In 3rd grade, students are no longer “learning to read” but they begin “reading to learn.” If students are not reading on grade level by the time they begin 3rd grade, half of the curriculum they will be taught for the remainder of their school years will be beyond their understanding.

**The Literacy Commitment** is a collaborative effort between schools, parents, and community to ensure our students reach reading readiness before grade 3.

## FACTS:

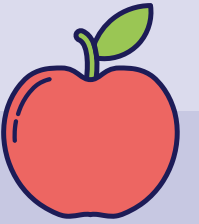
- As early as age 3, a child’s vocabulary can predict 3rd-grade reading achievement.
- 61% of children from low-income backgrounds have no children’s books at home.
- Students who do not read proficiently by grade 3 are 4 times more likely to drop out.
- At the end of 2024, only 27.4% of MSCS 3rd graders were proficient on the TCAP English Language Arts assessment.

## Additional Data:



### How does the District track reading readiness?

The District will collect academic data using the i-Ready assessment tool. Assessments will be given multiple times during the school year.



### How does the District determine a student's retention status regarding the Literacy Commitment?

The District aligns its promotion and retention policy in line with the guidance set by the state of Tennessee.



### How will families be notified of their child’s progress?

Reading readiness updates will be shared in school meetings, parent-teacher conferences, report cards, and i-Ready reports.



## Monitoring Student Success in English Language Arts (ELA)

Kindergarten	First Grade	Second Grade	A LOOK AHEAD: Third Grade
<b>ELA Measure:</b> <b>Universal Screener Assessment (i-Ready)</b> <b>(Normative Scores)</b> Fall: 352 Winter: 385 Spring: 412	<b>ELA Measure:</b> <b>Universal Screener Assessment (i-Ready)</b> <b>(Normative Scores)</b> Fall: 412 Winter: 443 Spring: 471	<b>ELA Measure:</b> <b>Universal Screener Assessment (i-Ready)</b> <b>(Normative Scores)</b> Fall: 475 Winter: 503 Spring: 519	<b>ELA Measure:</b> <b>Universal Screener Assessment (i-Ready)</b> <b>(Normative Scores)</b> Fall: 517 Winter: 535-536 Spring: 548

**For more information, visit [scsk12.org/commitment](https://scsk12.org/commitment).**

Memphis-Shelby County Schools offers educational and employment opportunities without regard to race, color, religion, sex, creed, age, disability, national origin, or genetic information.



### Tennessee Learning Loss Remediation and Student Acceleration Act

Third (3rd)-grade students must score “met expectations” or “exceeded expectations” on TCAP’s ELA portion. If students score "approaching expectations" or "below expectations" they will need to attend a learning loss bridge camp and, if required, participate in tutoring in 4th grade.

*Impacted 4th graders must show adequate growth on the TCAP's ELA section or they will be at risk of being retained. Contact your child's school for more information.*

### SCHOOL YEAR 2024-2025 3RD AND 4TH GRADE IMPACT

#### AT RISK FOR RETENTION?

##### **3RD GRADE STUDENTS WHO MAKE A SCORE OF "APPROACHING" CAN:**

Attend SLA (90% attendance) STUDENT MUST SHOW ADEQUATE GROWTH ON POST-TEST TO BE PROMOTED

**OR**

Attend tutoring for ALL of the child’s 4th grade year (90% attendance)

##### **3RD GRADE STUDENTS WHO MAKE A SCORE OF "BELOW" MUST:**

Attend SLA (90% attendance)

**AND**

Attend tutoring for ALL of the child’s 4th grade year (90% attendance)

If your student scores **MET EXPECTATIONS** or **EXCEEDED EXPECTATIONS** on the TCAP test or retest, they are promoted, no questions asked.



**If an impacted 4th grader does not show adequate growth, the student’s school must hold a **conference** with the student’s parent/guardian, the student’s teacher, and the school’s principal to determine whether they will be promoted to 5th grade.**

Memphis-Shelby County Schools identifies student achievement as its highest priority. The Tennessee Learning Loss Remediation and Student Acceleration Act has outlined student support regarding promotion and retention guidelines for the ELA portion of the TCAP test for **third and fourth grade students**. This change is also reflected in MSCS Policy 5013 Promotion & Retention.

Memphis-Shelby County Schools offers educational and employment opportunities without regard to race, color, religion, sex, creed, age, disability, national origin, or genetic information.